

# Alaska Department of Fish and Game

Habitat Section  
Southeast Region



## 192-30-10100-2010 Tributary 1

**ADDITION**

**Water body name:**

**Survey date:** 6/16/2024

**Quad:** Bering Glacier A-4

**Species & Lifestage:**

**Upper Reach Latitude:** 60.095867 **Longitude:** -142.471489

**Survey crew:** NJ, GA, FC

**Lower Reach Latitude:** 60.095106 **Longitude:** -142.472081

**Findings:** We surveyed this uncataloged stream using a backpack electrofisher and GPS and captured juvenile coho salmon. This stream is primarily surrounded by open, grassy habitat and widens just beyond waypoint 312. We fished upstream to waypoint 311 but did not catch additional coho; fish habitat may continue though (Table 1; Figures 1–3).

**Recommendations:** Add this uncataloged stream to the anadromous waters catalog for rearing coho salmon up to waypoint 312 (Figure 4).

**Nomination:** Pending

Table 1.–192-30-10100-2010 tributary 1 survey data.

Waypoint	Latitude	Longitude	Notes	Stream Width ft	Stream Substrate	Habitat Features	Gradient %	Sample Effort	Sample Results
311	60.096376	-142.471766		15-20	Fine Organic		0-1	EF	No Fish
312	60.095870	-142.471512	CO capture on river-right tributary of cataloged Iron Creek.	6-8	Fine Organic		1-2	EF	2 CO
313	60.095110	-142.472104	Confluence of Iron Creek and river-right tributary. Following main channel upstream.	6-8	Fine Organic		1-2		



Figure 1.–Juvenile coho salmon caught at waypoint 312.



Figure 2.—Upstream at waypoint 311.



Figure 3.—Downstream at waypoint 312.

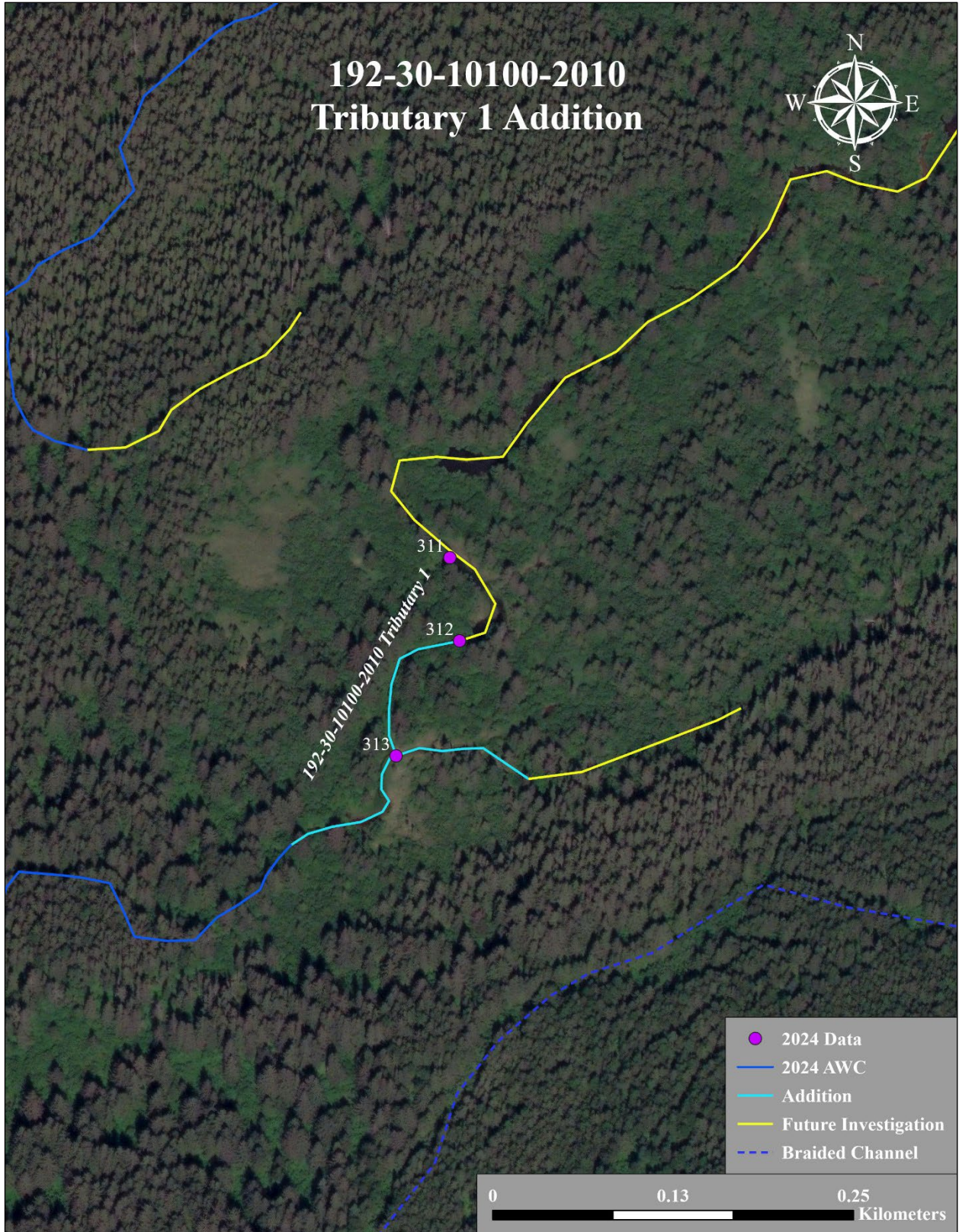


Figure 4. 192-30-10100-2010 tributary 1 addition map.